

A FINAL CHECKLIST

Before attending for your MRI scan:

- Complete your **health questionnaire** and bring it when you attend your appointment.

If you answer yes to any question,
please contact the MRI Co-ordinator on:

(04) 978 5533

- Bring any previous x-rays or scans.
- Wear no eye make-up if you are having a scan of any part of your head or face.
- If you are on prescribed medication, please continue as normal.
- It is important that you arrive in plenty of time for your appointment (20 minutes prior to your appointment time). This will allow for any last minute checks to be completed.

If you require further information before your scan, please contact the MRI Co-ordinator.

For appointments outside normal working hours, please pick up the red phone on the outside wall of our main entrance to advise us of your arrival.

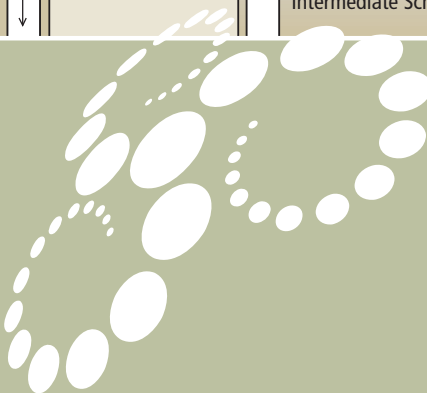
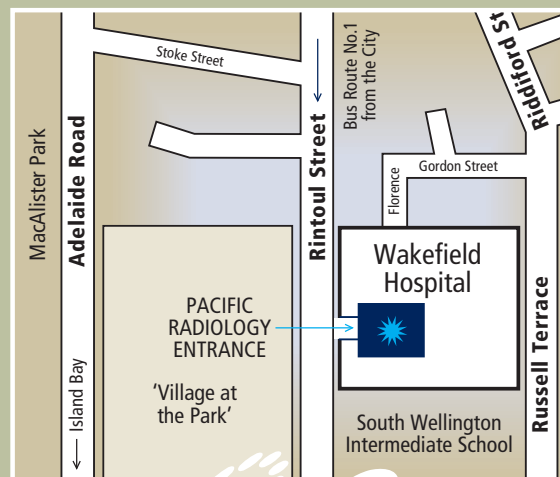
Where to go:

MRI is located at Pacific Radiology's Wakefield Hospital Branch:

99 Rintoul Street
Newtown
Wellington
Telephone: (04) 978 5533 (MRI Co-ordinator)
Facsimile: (04) 978 5501

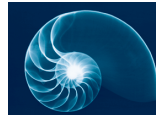
HOW TO GET THERE

WAKEFIELD Newtown, Wellington



Pacific Radiology

www.pacificradiology.co.nz



Pacific Radiology

MRI
AT WAKEFIELD



Pacific Radiology Ltd
Wakefield Hospital Branch
99 Rintoul Street
Newtown
Wellington



PARTNERSHIPS IN MEDICINE

ABOUT YOUR MRI

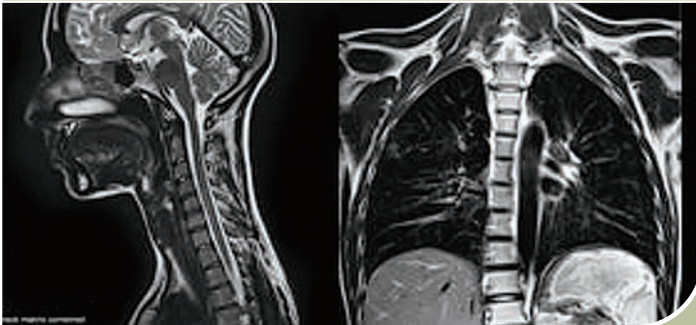
An MRI scan involves the use of a powerful magnetic field and radio waves which are switched on and off at very rapid speeds. Having an MRI scan is simple. The technologist will assist you onto the scanning table and will make you as comfortable as possible. The table is then moved into the scanner ensuring the anatomy being imaged is in the middle of the scanner.

The machine is open at both ends and remains so during the entire length of the scan. It does make very loud vibrating noises which change tune and pitch and this is quite normal. Earplugs or ear muffs are available and a call button is also provided as the technologists find it difficult to hear a patient over and above the noise of the machine.

At times there is a need for us to administer a contrast injection during your MRI scan. This contrast has been designed specifically for MRI and increases the sensitivity of the MRI scan to various pathologies. If the use of contrast is a possibility for your scan, the MRI technologist will discuss this with you at the time of your appointment.

Most examinations take approximately 30 minutes but occasionally this can take longer. There are no adverse affects from having this scan.

Results from magnetic resonance imaging (MRI) scans.



WHAT DO I NEED TO DO BEFORE MY APPOINTMENT?

Carry on with your normal routine.

Fill out the health questionnaire that comes with your appointment letter.

If you answer yes to any of the questions please contact the MRI bookings co-ordinator.

It is particularly important that you let us know prior to your scan if you have any of the following:

- A pacemaker for your heart.
- Any metal clips (aneurysm clips) inside any part of your body.
- Any metal inside you from past operations.
- Any metal fragments in your body in particular your eyes from an accident or metal work.
- Female patients – please let us know if you are (or think you are) pregnant.

Answering yes to any of these questions does not automatically preclude you from having an MRI scan but it does allow us to ensure your safety.

ON THE APPOINTMENT DAY

Arrive in plenty of time for your examination as this will allow for any last minute checks and paperwork to be completed (20 minutes before your appointment is adequate).

Please bring all previous imaging and your completed health questionnaire.

If your appointment is after 5.30pm, the doors into Pacific Radiology are locked. Please pick up the red phone on the wall and the MRI Technologist will let you in.

AT THE MRI UNIT

The MRI Technologists will go through your completed health questionnaire with you and they will ask about your medical history.

A hospital gown will be provided for you to change into and you will be required to remove all metal from your person including jewellery, hair clips and piercings.

FREQUENTLY ASKED QUESTIONS

IS MRI SAFE?

Yes.

Neither the magnetic fields nor the radio waves used are known to be harmful. The scanner does not use X-rays.

WHAT ABOUT MY JEWELLERY & VALUABLES?

If possible leave all metal items at home. A locker will be provided for valuables to be stowed away securely.

RESULTS

Results of your scan will be sent to your referring doctor within a few days of your appointment.

IMPORTANT!

Please bring the completed health questionnaire with you on the day of your appointment.



If you answer yes to any question, please contact the MRI Co-ordinator on:

(04) 978 5533